

# Technical Description **Form Traveller**



***Shenghua Heavy Crane Group***

# Form Traveller

Form Traveller is widely used in the world for the construction cast-in-situ. Both the overhead and the underslung form traveller are designed for free cantilever construction of pre-stressed girder and cable - stayed concrete bridges.

Features of Form-Traveller are: light weight, flexibility, small deflection.

Shenghua Heavy Crane Group form traveller can be customized to meet clients' requirements and designed to comply with international codes.



## Overhead Form Traveller

Overhead form traveler are easier to be use compare to underslung model. And it is easier to be modified for future usage.



### Product Overview

The form traveller is widely used in the world for free cantilever construction of post-tensioned box girder-and cable-stayed concrete bridges. This method of constructing a bridge structure is used mainly for bridges spanning deep valleys or for inaccessible terrain.

Our formwork can be supplied with wooden, steel or plastic sheeting, which can be recycled.

The system is lightweight, versatile, easy to assemble and operate, rolling forward on rails and the system can be reset quickly and easily.

The standard form traveller may be adapted to suite almost any cross-section, and is easily adjustable during operation to variations in segment length (up to 5 m), section height, web thickness, and deck width.

Shenghua Heavy Crane Group form traveller can be customized to meet clients' requirements and designed to comply with international codes.



## Product Features

1. Overhead form traveler is easier to be modified for future usage
2. The form traveler consist of a self - supporting structure combined with a project — related formwork
3. The concreting support, self launching operation and level adjustments are all by means of hydraulic system



## Underslung Form Traveller

Form Traveller is widely used in the world for the construction cast-in-situ.





## Product Overview

The form traveller is widely used in the world for free cantilever construction of post-tensioned box girder-and cable-stayed concrete bridges. This method of constructing a bridge structure is used mainly for bridges spanning deep valleys or for inaccessible terrain.

Our formwork can be supplied with wooden, steel or plastic sheeting, which can be recycled.

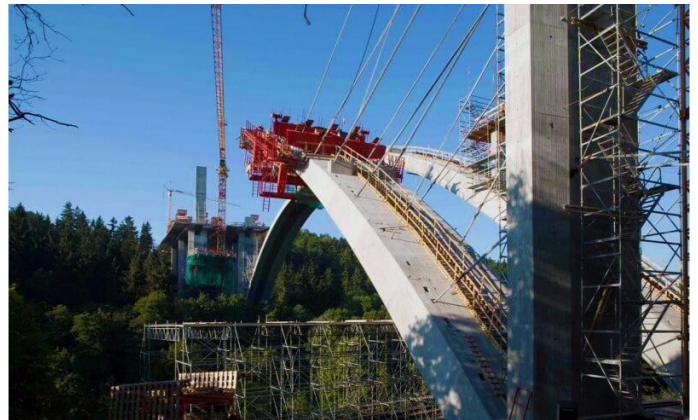
The system is lightweight, versatile, easy to assemble and operate, rolling forward on rails and the system can be reset quickly and easily.

The standard form traveller may be adapted to suite almost any cross-section, and is easily adjustable during operation to variations in segment length (up to 5 m), section height, web thickness, and deck width.

Shenghua Heavy Crane Group form traveller can be customized to meet clients' requirements and designed to comply with international codes.

## Product Features

1. Underslung Form Traveler have its main parts hang under the completed bridge hence providing a clear space above the formwork, which means prefabricated reinforcement cages can be install easily.
2. The underslung Form Traveler system can be adapted to different types of bridges, such as on the construction of Arch for the Arch Bridge or when dealing with any slanting column structure or for certain Cable Stay bridges.



### SHENGHUA HEAVY CRANE GROUP

Add: Crane Industrial Park, Xinxiang City, Henan Province, China

Email: [sales@shenghuacrane.com](mailto:sales@shenghuacrane.com)

Mobile: +86 155 373 17599

Tel: +86 373-3808200

Web: <http://www.shenghuacrane.com/>