

Technical Description

Movable Scaffolding System



Shenghua Heavy Crane Group

Movable Scaffolding System

Shenghua Heavy Crane Group series Movable Scaffolding System is a fully self-supporting formwork system that builds the bridges with span-by-span cast-in-situ method, it builds and relocated by itself from span to another span.

MSS is very useful when Segmental construction or other cast-in-place methods are not economical or are not possible.

MSS can be use for Double-T, Box girder or U-Shape bridges.



Overhead Movable Scaffolding System

Movable scaffolding system is a quick, reliable and economical solution for modern bridge construction. It's generally used in cast in-situ bridge construction.

Overhead Movable scaffolding system is very useful for building cast-in-situ bridges with low pier or varies type of pier.

Product Overview

Both the overhead and the underslung MSS consist of a self supporting structure combined with a project specific exterior formwork.

Shenghua Heavy Crane Group Series MSS is a fully self-supporting formwork system that builds the bridges with span-by-span cast-in-situ method; it builds and relocated by itself from span to another span. MSS is very useful when Segmental construction or other cast-in-place methods are not economical or are not possible. MSS can be use for Double-T, Box girder or U-Shape bridges.

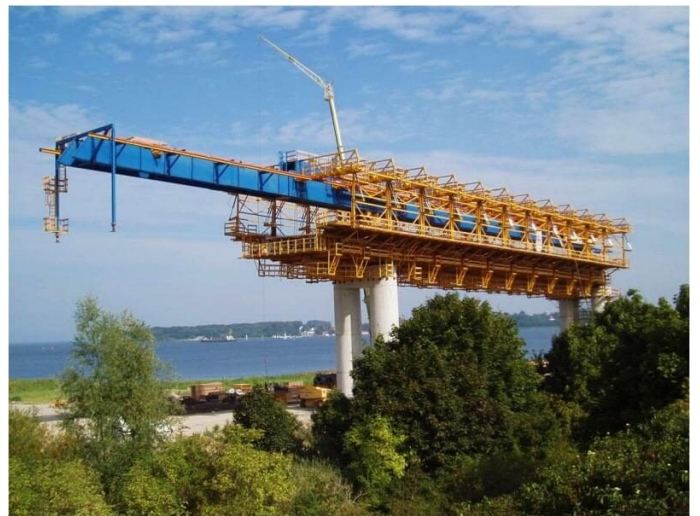
Overhead MSS is very useful for building cast-in-situ bridges with low pier or varies type of pier.



Product Features

The overhead movable scaffolding system we provide have the following characteristics:

1. Adopt two - main beam and two - span structure is safer and faster, it has a low clearance requirement under the bridge and it's very suitable for low piers.
2. The exterior formwork can be implemented open and closed horizontally.
3. Lengthways moving and hanging adopt the motor drive convenient and swift.
4. The lifting and transverse opening of the overhead MSS are all hydraulic control, which is smooth and safe and reliable, which greatly reduces the labor intensity and improves the construction efficiency.
5. The cost of the construction is greatly reduced by the ability of each leg to go through the installation and reduce the input of the auxiliary equipment.



Underslung Movable Scaffolding System

Movable Scaffolding System is a quick, reliable and economical solution for modern bridge construction.

Underslung MSS is very useful when the bridge designed with monotype of pier, which is normally the case when the bridge is crossing river.



Product Overview

Movable Scaffolding System is generally used in cast in-situ bridge construction. Both the overhead and the underslung MSS consist of a self supporting structure combined with a project specific exterior formwork.

Underslung MSS has all the advantages similar to its over head model, except that it gives additional users friendly feature by providing a clear space above the formwork. The bearing system of main girder below the bridge deck, external formwork support system on bearing main girder, the girders system through the leg support on the bearing, and use the high strength fine rolled steel bar to anchor the legs to the piers.

The design of our advanced equipment has been improved and optimized over the years, the system is light weight, easy to assemble, practical in design, supported by internationally known hydraulic and crane systems, and most importantly, efficient in operation.



Product Features

1. When the longitudinal hole is over, the external formwork is opened with the main beam or separately, to avoid the pier.
2. The legs can be reloaded on their own or using the auxiliary crane.
3. The external formwork system moves along with the main beam system.
4. The underslung MSS occupies a big clearance under a bridge, requirements the height of the bridge pier is more than 4 meters, which is more adaptive to the high pier.

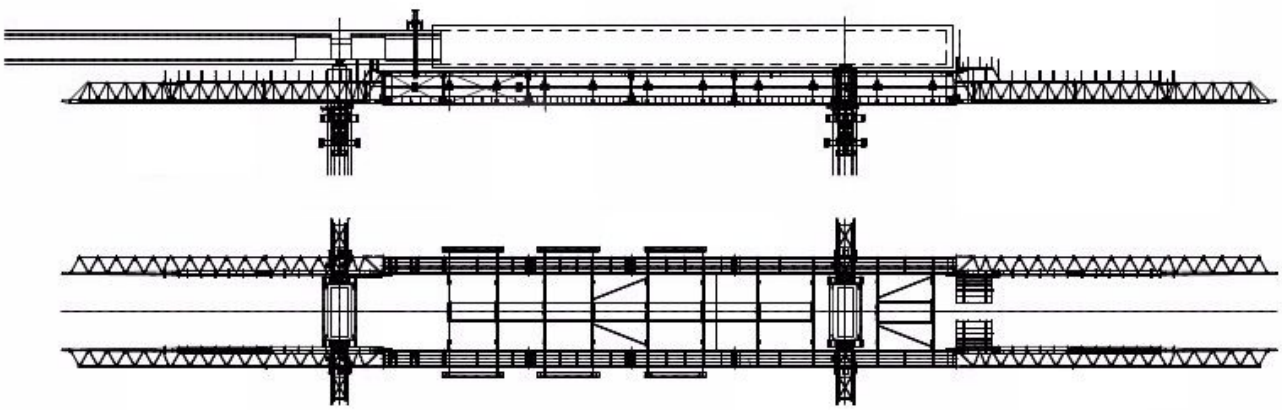
Movable Scaffolding System Projects

1600T Underslung Movable Scaffolding System

In the bridge construction, when we choose the cast-in-site method, one Movable Scaffolding System will be your best choice. Shenghua Heavy Crane Group had provide 2 sets Underslung Movable Scaffolding System for THE 4th CONSTRUCTION COMPANY OF CRCC 15th BUREAU, in the year 2009.

MSS could be overhead and underslung type according to the construction site situation, and both consist of a self-supporting steel structure, this structure combined with a project specific exterior formwork.

And hydraulic systems are designed to move the large machine. It can be widely used in the construction of various bridge, such as highway, LRT, MRT etc.



Details:

Client: THE 4th CONSTRUCTION COMPANY OF CRCC 15th BUREAU

Year of Manufacture: 2009

Construction method: Cast-in-situ method

Number of Sets: 2

Characteristics:

Max span length: $\leq 48\text{m}$

Winch lifting capacity: 1600 tons

Max transversal slope: $\leq 3.5\%$

Max longitudinal slope: $\leq 2.5\%$

Adaptive radius $\geq 2000\text{m}$



SHENGHUA HEAVY CRANE GROUP

Add: Crane Industrial Park, Xinxiang City, Henan Province, China

Email: sales@shenghuacrane.com

Mobile: +86 155 373 17599

Tel: +86 373-3808200

Web: <http://www.shenghuacrane.com/>